



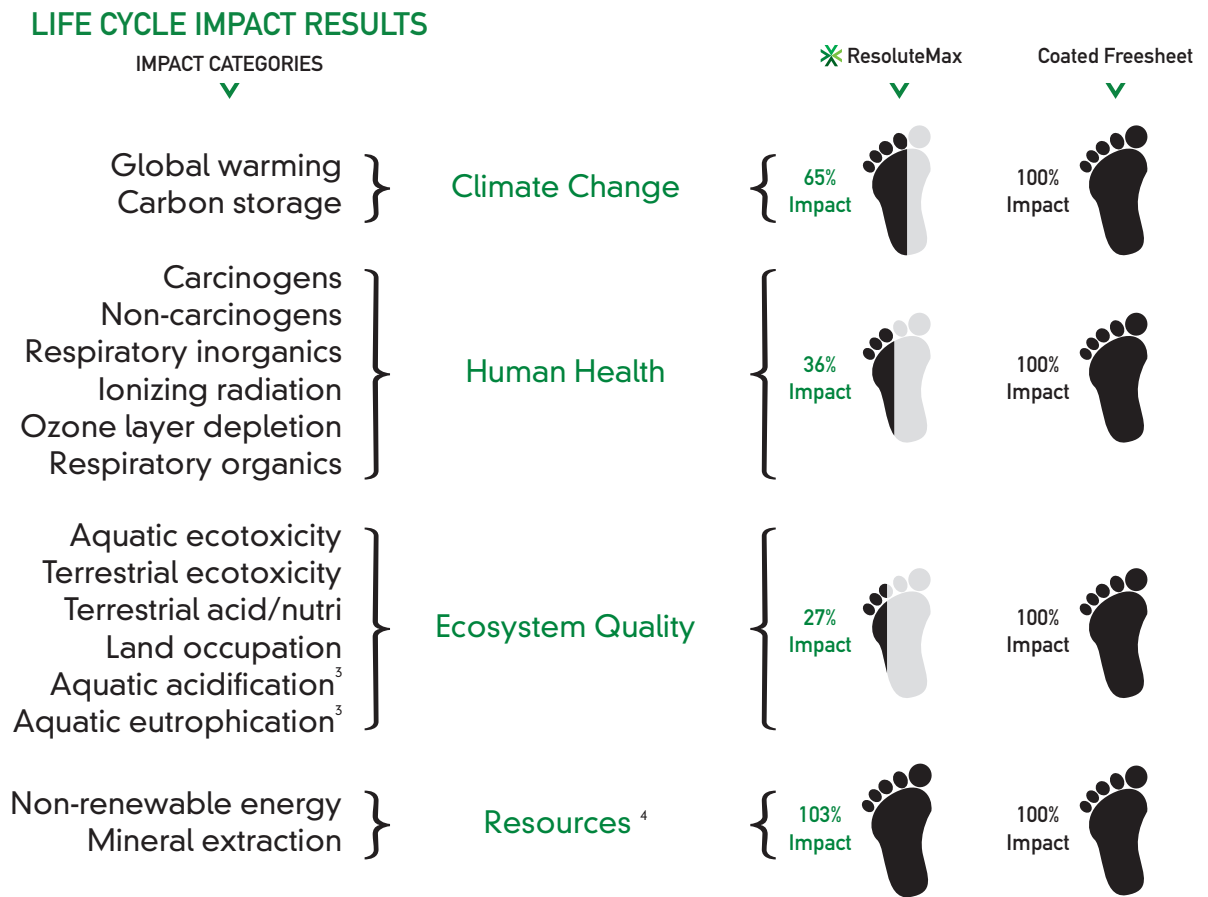
ResoluteMax has a smaller environmental footprint than coated freesheet (CFS) over the product lifecycle.

- ▶ A life cycle assessment (LCA) study commissioned by Resolute Forest Products examined and compared the environmental impacts of the production, transportation, usage and disposal of its Align coated grade, (ResoluteMax, a coated mechanical #3 paper), to the average of North American coated freesheet paper.¹
- ▶ The LCA found ResoluteMax to have a smaller environmental impact than coated freesheet (CFS) over the product lifecycle in 13 of 15 categories examined.

KEY FINDINGS:

1. Smaller Carbon Footprint
2. Less Energy Used

RELATIVE FOOTPRINT OF ALIGN COATED COMPARED TO CFS: Per ream of paper, over the product life cycle.²



LCA METHODOLOGY

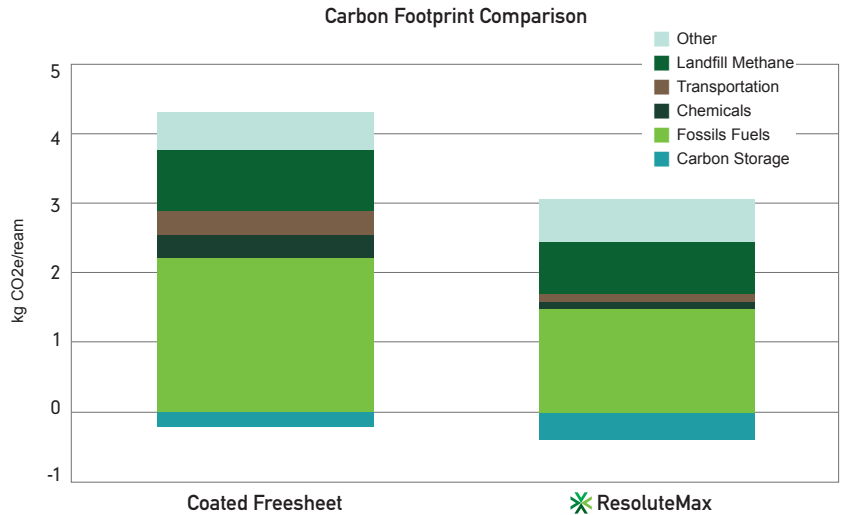
- ResoluteMax inventory data came from Resolute Forest Product's mill in Catawba, SC
- CFS inventory data came from a "Life Cycle Assessment Of North American Printing And Writing Paper Products, Final Report", prepared for AF&PA and FPAC by NCASI, June 18, 2010.
- Inputs included wood fiber, chemicals, fuels and electricity. Outputs included air emissions, liquid effluent, solid wastes and disposal.
- The two products are handled the same way by the customer, resulting in little if any difference in impact from the use phase, therefore no analysis was included for the usage phase.
- This LCA was carried out under contract by Dr. Martin Fairbank, a Resolute employee currently on secondment with a third-party organization. Dr. Fairbank holds a Ph.D. in chemistry and has 26 years of experience in the pulp and paper industry. The study was conducted according to the requirements of ISO 14044 and was peer-reviewed by a panel of three independent experts.
- For details, please refer to the LCA Report to Third Parties and the LCA Executive Summary found at www.resolutefp.com/LCA.

KEY FINDING #1: SMALLER CARBON FOOTPRINT

- ▶ ResoluteMax has a carbon footprint that is 35% less than coated freesheet over its life cycle.
- ▶ Every 100 tonnes of ResoluteMax used instead of CFS equates to removing the annual greenhouse gas emissions of 9 passenger cars.⁵



As part of our membership in the World Wildlife Fund (WWF) global Climate Savers program, we are committed to helping our customers reduce their greenhouse gas (GHG) emissions by offering them products with a smaller carbon footprint. Resolute Forest Products has committed to a 65% reduction in GHG emissions from Company operations by 2015, compared to 2000 levels. To learn more visit resolutefp.com/WWF-Climate-Savers.aspx

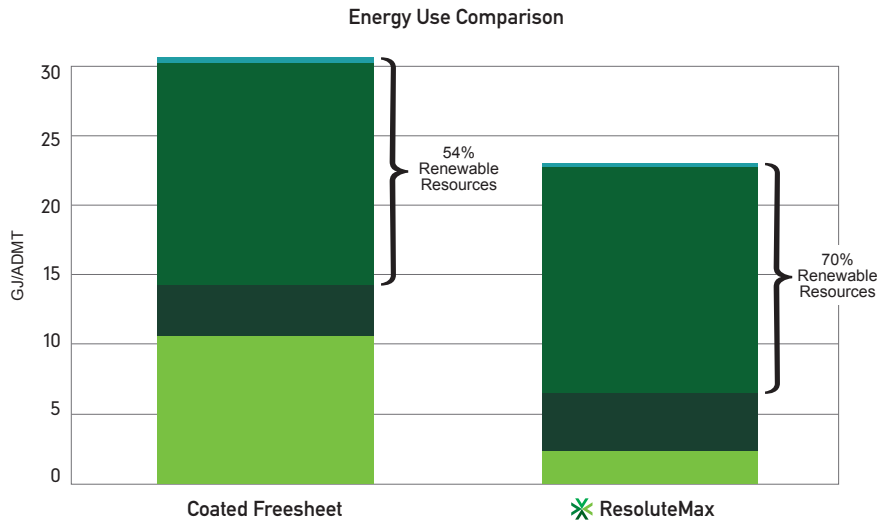


Source: LCA Report to Third Parties

KEY FINDING #2: LESS ENERGY USE

- ▶ ResoluteMax uses 25% less energy to produce compared to the average for coated freesheet.⁶
- ▶ For every 100 tonnes of ResoluteMax used instead of CFS, the average annual energy use of 25 U.S. households is saved.⁷

- Electricity from renewable sources
- Fuel from renewable sources (biomass)
- Electricity from non-renewable sources
- Fuel from non-renewable sources (fossil fuel)



Source: LCA Report to Third Parties

NOTES

- 1 CFS values used for comparative purposes are industry averages; a specific CFS mill may have values that are higher or lower than the average.
- 2 ResoluteMax is at 45 lb. basis weight, and CFS is at 50 lb. basis weight.
- 3 The data for aquatic ecotoxicity and aquatic acidification are not included in the Ecosystem quality score as there was no weighting factor available to convert them into the units of the endpoint. Results for these two categories are published in the LCA Report to Third Parties.
- 4 The Catawba mill showed a slightly higher impact in the non-renewable energy category. This is due to the fact that the South Carolina electrical grid, which provides power to the Catawba mill, is composed of 97% non-renewable energy, including 51% nuclear energy, compared to 81% non-renewable with 16% nuclear for the mixture of mills used in the NCASI CFS study. Nuclear energy is considered non-renewable, but unlike fossil fuel, it has a low carbon footprint.
- 5 Source: U.S. Environmental Protection Agency <http://www.epa.gov/cleanenergy/energy-resources/refs.html>
- 6 Energy use data is for mill production only.
- 7 Source: U.S. Department of Energy / US Energy Information Administration <http://205.254.135.7/consumption/residential/data/2005/c&e/summary/pdf/alltables1-15.pdf>

FOR MORE INFORMATION ON THIS LCA OR ON RESOLUTE FOREST PRODUCTS ALIGN PAPER GRADES:

Laura Ashley
 Marketing Manager
 803 817-4670
laura.ashley@resolutefp.com
www.alignpaper.com
www.resolutefp.com

